

An aerial photograph of a ranch in Teton County, Wyoming, during the golden hour of sunset. The landscape features rolling green hills, a small pond reflecting the sky, and several rustic wooden buildings. A dirt road winds through the property. The sky is filled with soft, colorful clouds.

# Bull Creek Ranch

TETON COUNTY, WYOMING



Hunting | Ranching | Fly Fishing | Conservation





LIVE WATER  
PROPERTIES

# Bull Creek Ranch

Teton County, Wyoming

±150 Acres | Listing Price: \$11,995,000

Nestled deep in Wyoming's wild Gros Ventre Mountain Range, Bull Creek Ranch is a ready-to-enjoy retreat spanning ±150 acres in Teton County. This legacy property offers immediate comfort and adventure with thoughtfully developed infrastructure, a striking lodge, and modern off-grid systems. Whether it's casting a fly into the meandering Fish Creek, saddling up for a trail ride, or setting out on a snowmobile from the front door, every outdoor pursuit begins here. The property is ecologically significant, situated along a critical wildlife and fish migration corridor that mirrors the grandeur of nearby National Parks. Seldom does such a complete and private wilderness experience come to market.

## Contact

John Merritt, COO/Partner/Responsible Broker  
307.699.1166 | [jmerritt@livewaterproperties.com](mailto:jmerritt@livewaterproperties.com)

Alex Maher, CEO/Co-Founder  
307.690.9515 | [alex@livewaterproperties.com](mailto:alex@livewaterproperties.com)  
[www.livewaterproperties.com](http://www.livewaterproperties.com)



## LOCATION

Bull Creek Ranch lies in the Fish Creek drainage, a tributary of the iconic Upper Gros Ventre River. Two hours from the iconic Town Square in Jackson Hole, the ranch is accessible by vehicle in the summer and by over-snow vehicles in the winter. Practically surrounded by national forest and with direct access to trails, creeks, and wide-open space, this location provides the unique blend of seasonal seclusion and year-round recreation.











## IMPROVEMENTS

The Ranch features an excellent collection of rustic and refined structures totaling over 7,000 sqft of livable space. A series of historic and modern cabins, a functional 2,000 sqft barn, a 2,100 sqft metal shop building, and a thoughtfully designed modern lodge create an inviting compound ideal for gatherings. The lodge, completed in 2009, serves as the heart of the ranch—a warm and spacious setting for entertaining, storytelling, and relaxing after a day outdoors.

Bull Creek Ranch is fully off-grid, powered by a Tesla solar system with a diesel backup generator for added reliability. Water is sourced from wells, and internet is currently supplied via Starlink, offering impressive connectivity.





















## HISTORY

When settlers arrived in Jackson Hole in the late 1800s, they were quickly drawn to the Gros Ventre drainage for its abundant water, pasture, and sheltering mountains. Bull Creek Ranch was originally homesteaded as a summer outpost and has retained that same timeless serenity ever since. The land reflects the rhythms of generations past, offering a peaceful escape while standing as a testament to the region's pioneering spirit.





## FISHING

Bull Creek Ranch boasts approximately half a mile of private frontage on Fish Creek, with another half mile bordering public lands. This wild fishery winds through the property with a dynamic streambed that shifts slightly each season. These waters are hallowed ground for native Snake River, fine spotted cutthroat trout, which migrate upstream to spawn each spring and linger through summer to feed in the insect-rich habitat before returning to the Gros Ventre and Snake River.















## HUNTING AND WILDLIFE

With direct access to National Forest, the Ranch offers exceptional opportunities for hunting and wildlife observation, whether stepping out your front door or heading deeper into the surrounding wilderness. The property sets up marvelously as a jumping off point for pack trips with horses to get deep into the wilderness for a true back country hunt.







## SUMMER RECREATION

Owning Bull Creek Ranch is akin to holding a private enclave within a landscape as rich and wild as Yellowstone's famed Lamar Valley. The property lies in a crucial migration corridor—hosting antelope traveling from the Sublette Flats to Grand Teton National Park, moose that winter in the area, and regular visits from elk and mule deer. Otters, cranes, coyotes, bears, and a variety of migratory birds also frequent the land.



## WINTER RECREATION

In winter, Bull Creek Ranch transforms into a snow-covered paradise. Snowmobiling is world-class here, with direct access to groomed trails through Forest Service land and connections to the legendary Togwotee Pass system (the Continental Divide). The Ranch is ideal for weekend sledding escapes, offering deep snow, epic scenery, and easy return to the lodge's comforts.





## WATER RIGHTS & CONSERVATION EASEMENTS

Bull Creek Ranch includes valuable water rights for irrigation across its meadows, details of which are available upon request. The property currently has no conservation easements in place, offering flexibility for future stewardship decisions.







## SUMMARY

Bull Creek Ranch is that spectacular offering where rugged wilderness and refined comfort meet. With ±150 acres of pristine Teton County landscape, unmatched privacy, immediate usability, and direct access to some of the best recreation in the West, it's a turnkey retreat with legacy potential. Whether you envision it as a seasonal escape, a multi-generational compound, or a conservation investment, this is a once-in-a-generation opportunity in the heart of Wyoming's wild country.









# BULL CREEK RANCH

±150  
A C R E S

LOCATED IN TETON COUNTY, WYOMING

LISTED AT  
\$11,995,000

SECLUDED TURNKEY WYOMING RETREAT WITH PANORAMIC VIEWS,  
WILDLIFE, AND LEGACY-RANCH POTENTIAL

## IMPROVEMENTS

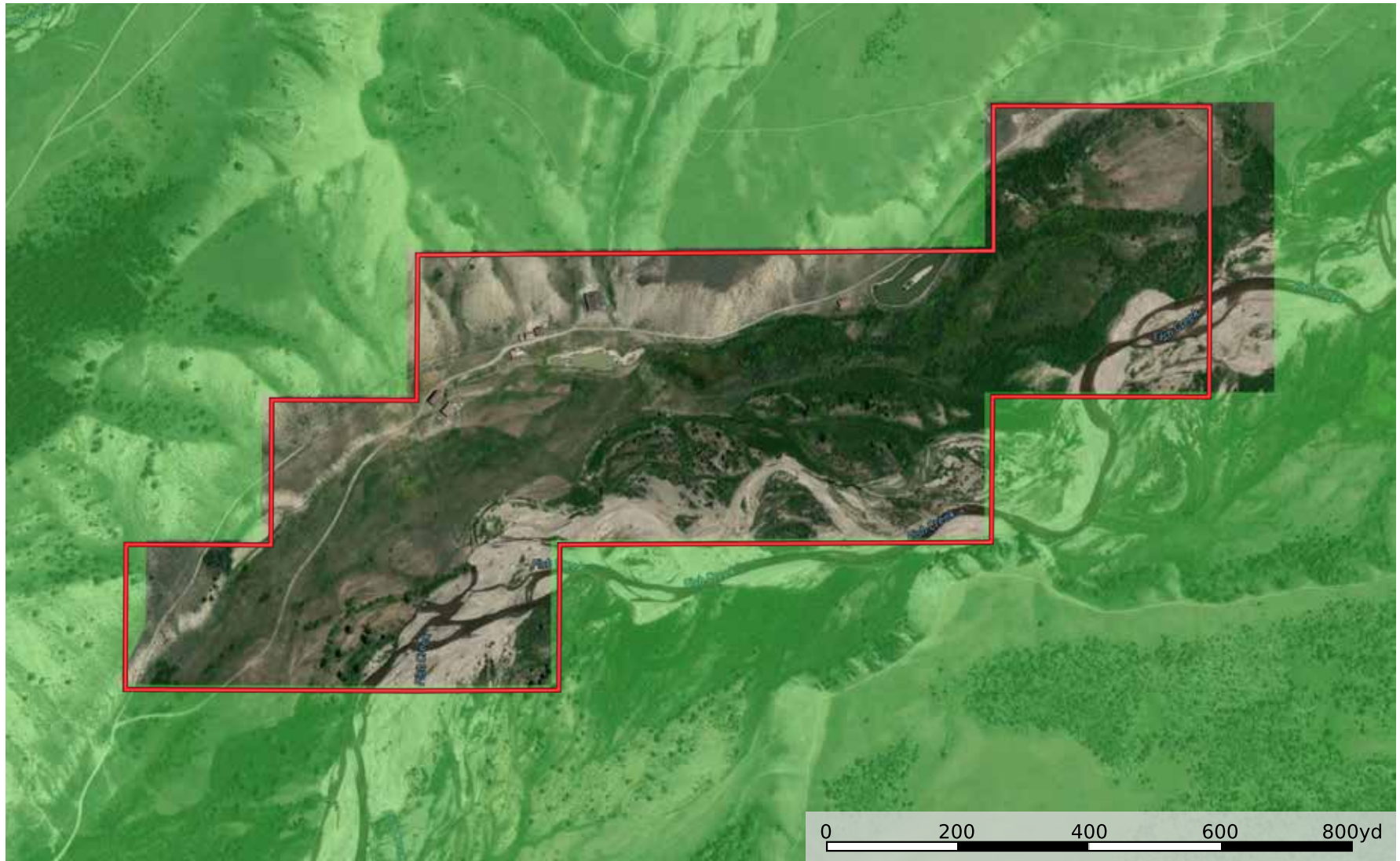
- Over 7,000 sqft of livable structures, including historic cabins, a modern lodge, a 2,000 sqft barn, and a 2,100 sqft metal shop
- Tesla solar power system and a diesel backup generator
- Water sourced from on site wells and high-speed internet access provided via Starlink

## LOCATION

- Access to Grand Teton National Park within an hour drive
- Two-hour drive to Jackson Hole Town Square and ski opportunities
- 2.45-hour drive to Yellowstone







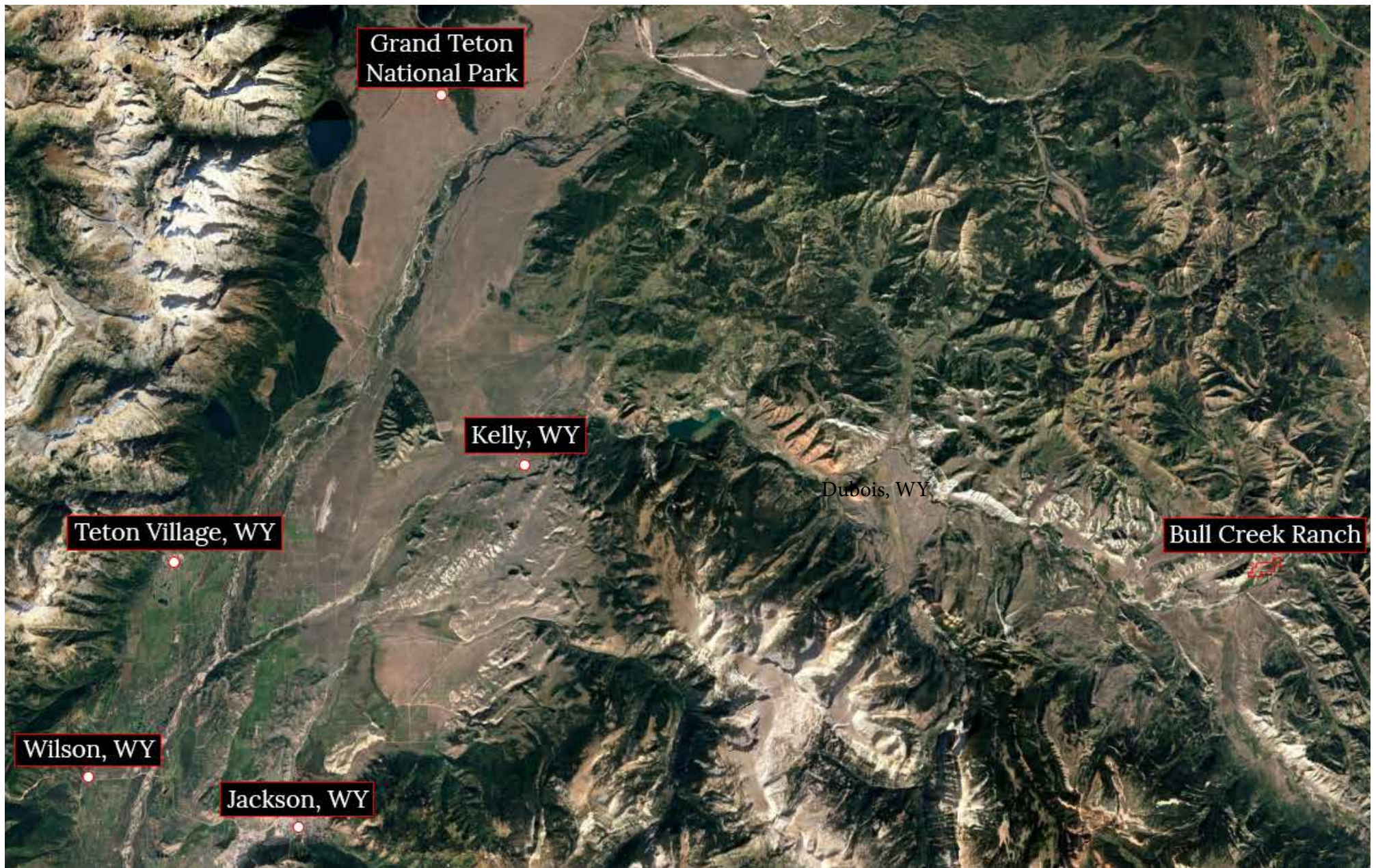
## Bull Creek Ranch - Aerial Map

••Maps are for visual aid only, accuracy is not guaranteed.



LIVE WATER  
PROPERTIES [www.livewaterproperties.com](http://www.livewaterproperties.com)





## Bull Creek Ranch - Location Map

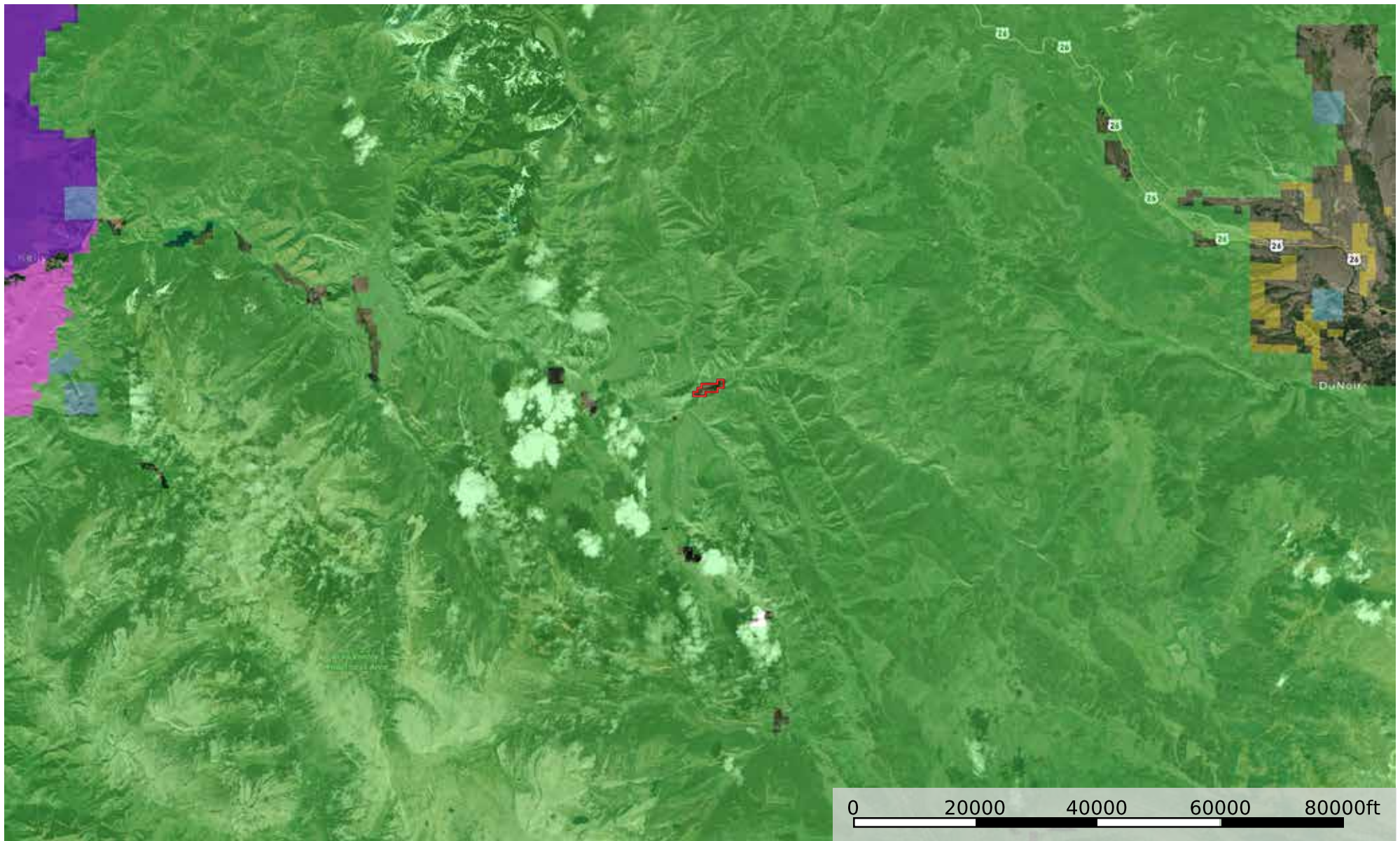
••Maps are for visual aid only, accuracy is not guaranteed.



LIVE WATER  
PROPERTIES

[www.livewaterproperties.com](http://www.livewaterproperties.com)





- Boundary
- Forest Service
- State Land
- Fish and Wildlife
- National Park
- Other
- BLM
- Local Government

# Bull Creek Ranch - National Forest Map

••Maps are for visual aid only, accuracy is not guaranteed.