



# 1105 Shasta Daisy Court

DRIGGS, IDAHO

LIVE WATER  
P R O P E R T I E S



Hunting | Ranching | Fly Fishing | Conservation





LIVE WATER  
PROPERTIES



## 1105 SHASTA DAISY COURT

Driggs, Idaho

.53 Acres | Listing Price: \$3.85M

This custom home in Tributary, Driggs, Idaho, offers unmatched craftsmanship and a maintenance-free design, perfect for a vacation getaway. Overlooking a 1.5-acre pond, its sunlit interiors blend seamlessly with nature through a 16-foot accordion glass wall, opening to an expansive deck. A Taj Mahal quartzite kitchen island, hidden-panel appliances, and five natural stone countertops set a new standard in elegance. The primary suite features a spa-like stone soaking tub, providing the ultimate relaxation. Located in Tributary's private 1,500-acre community, residents enjoy a world-class golf course, private fishing ponds, trails, and a 27,000 sq. ft. clubhouse—all just minutes from Driggs and a short drive to Jackson Hole.

### Contacts

Tate Jarry, Broker

307.413.2180 | [tate@livewaterproperties.com](mailto:tate@livewaterproperties.com)

[www.livewaterproperties.com](http://www.livewaterproperties.com)

## UNPARALLELED CUSTOM CRAFTSMANSHIP IN TRIBUTARY

This exceptional luxury home redefines craftsmanship and innovation, offering premium upgrades far beyond standard construction. Every detail has been meticulously curated to blend modern comfort with timeless elegance, creating a residence as breathtaking as its natural surroundings.



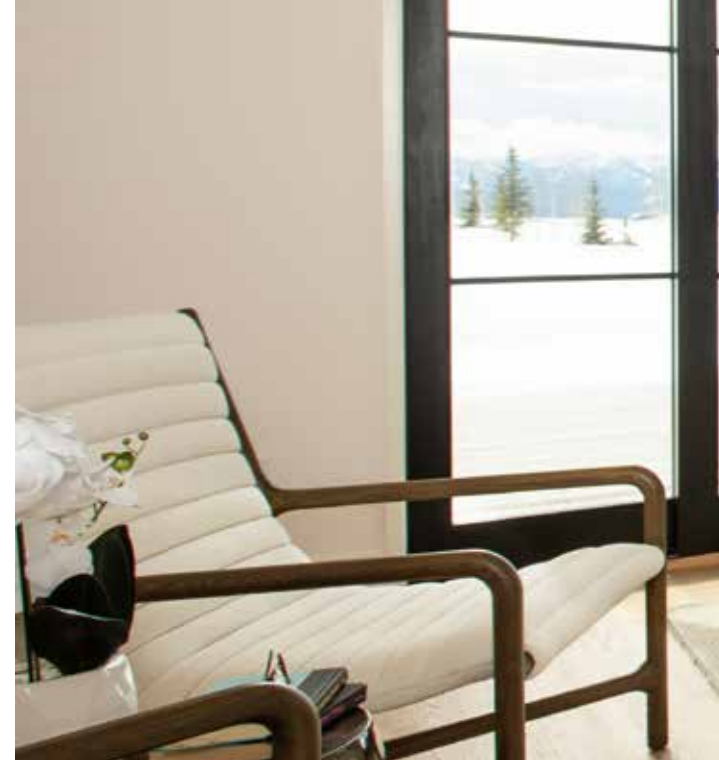






## A PRIMARY SUITE BEYOND COMPARE

The primary suite is a true retreat, designed for both relaxation and indulgence. An oversized natural stone soaking tub serves as the focal point, enhanced by wall-mounted premium faucets and sculpted stone vessel sinks—a spa-like experience that transcends the ordinary.





## A KITCHEN THAT COMMANDS ATTENTION

Step inside and experience the extraordinary. The gourmet kitchen showcases a Taj Mahal quartzite island with waterfall edges, seamlessly extending into a striking six-foot backsplash—a level of design sophistication rarely found in standard homes. Hidden-panel appliances and true wood veneer custom cabinetry elevate both function and aesthetics, while five distinct natural stone countertops throughout the home bring refinement to the kitchen, bathrooms, and laundry.



## SEAMLESS INDOOR-OUTDOOR LIVING

Indoor and outdoor living merge effortlessly with a 16-foot accordion-style glass wall, opening onto an expansive deck with wraparound stair steps. Built with a faceless fastener system, the deck maintains a sleek, seamless look while preventing water infiltration for long-term durability. This west-facing home overlooks a serene 1.5-acre pond, capturing the beauty of its surroundings. Afternoon sunlight fills the living spaces, creating a warm and inviting ambiance throughout the day.





## UNRIVALED CONSTRUCTION & EFFICIENCY

This home's structural integrity is unmatched. LVL-engineered studs ensure straighter, more stable walls, particularly in cabinetry areas. A full-depth spray foam insulation system and zip sheathing create an airtight, energy-efficient envelope, reducing energy costs while enhancing durability.







## REFINED NATURAL ELEMENTS

Reclaimed wood elements add warmth and character—from floating kitchen shelves with integrated lighting to the living room's stacked limestone fireplace with a nine-inch reclaimed wood mantel. Even the pocket doors feature soft-close hardware, an often-overlooked but luxurious touch.

## STRIKING EXTERIOR WITH MAINTENANCE-FREE DESIGN

Outside, the Rocky Mountain Moss stone exterior, sourced from Montana, pairs beautifully with Alaskan yellow cedar siding, finished with a living mineral stain for a rich, natural aesthetic that requires minimal upkeep. Thoughtfully designed to be low-maintenance, this brand-new home ensures peace of mind—the perfect hassle-free vacation retreat, ready for immediate enjoyment.

## A HOME LIKE NO OTHER

This is more than a residence—it's a masterpiece of craftsmanship, innovation, and luxury. From the hidden appliances to the premium finishes and energy-efficient materials, every feature elevates it beyond the standard. Overlooking a tranquil pond and bathed in natural light, this one-of-a-kind home in Tributary is ready to be experienced.















## AMENITIES OF TRIBUTARY CLUB

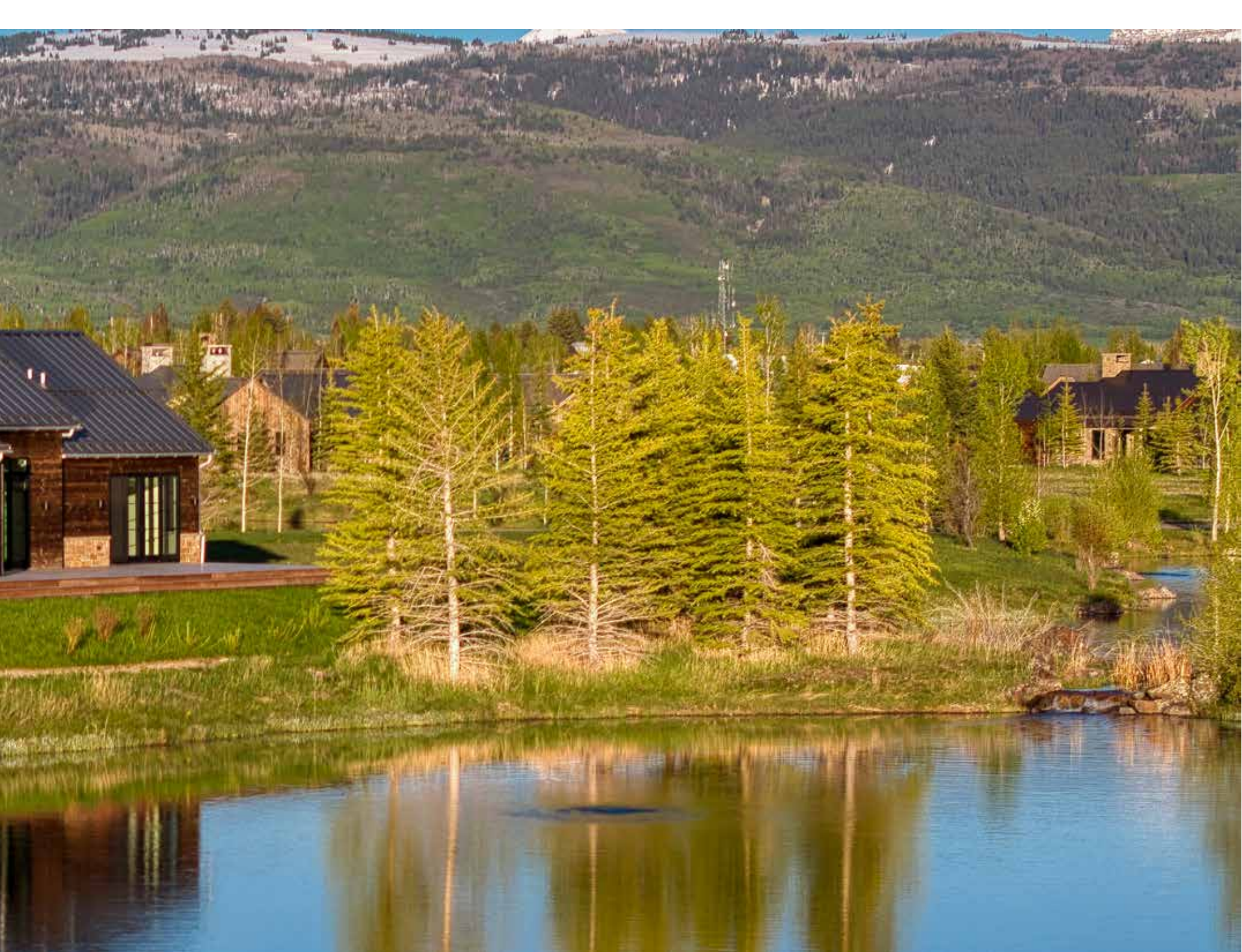
Nestled in the heart of Teton Valley, this \$3.95M home offers exclusive access to the Tributary Club—one of the most prestigious private communities in the Rockies. Residents enjoy a newly renovated 18-hole championship golf course designed by David McLay Kidd, a luxurious full-service spa, fitness center, and a year-round outdoor pool. The Club also features miles of groomed trails, fly-fishing ponds, and curated wellness programming designed for recreation and rejuvenation in every season.

Tributary is undergoing thoughtful capital improvements to further enhance its world-class amenities and preserve the natural beauty of the valley. Owned by Byron Trott of BDT & MSD Partners—who also owns a residence in the community—the development reflects a commitment to excellence and long-term vision. Conveniently located near the Driggs-Reed Memorial Airport with private aviation access, this home offers unparalleled luxury, privacy, and accessibility for discerning buyers.











## DISCOVER THE TRIBUTARY LIFESTYLE

Nestled in the heart of the Teton Valley, Tributary in Driggs, Idaho, offers an exclusive mountain lifestyle on 1,500 private acres. Residents enjoy a world-class David McLay Kidd golf course, private fishing ponds, and miles of trails for year-round recreation. The 27,000 sqft clubhouse features fine dining, wellness facilities, and vibrant social gatherings, creating the perfect balance of luxury and adventure. Just minutes from Driggs and a short drive to Jackson Hole, Tributary is the ultimate retreat for those seeking an elevated mountain living experience.









# 1105 SHASTA DAISY COURT

±.53 A C R E S

LOCATED IN DRIGGS, IDAHO

LISTED AT  
\$3.85M

EXPERIENCE LUXURY AND ADVENTURE IN THIS CUSTOM HOME NEAR DRIGGS, OFFERING EXCLUSIVE ACCESS TO GOLF, FLY FISHING, AND MOUNTAIN VIEWS IN TETON VALLEY'S PREMIER COMMUNITY.

## IMPROVEMENTS

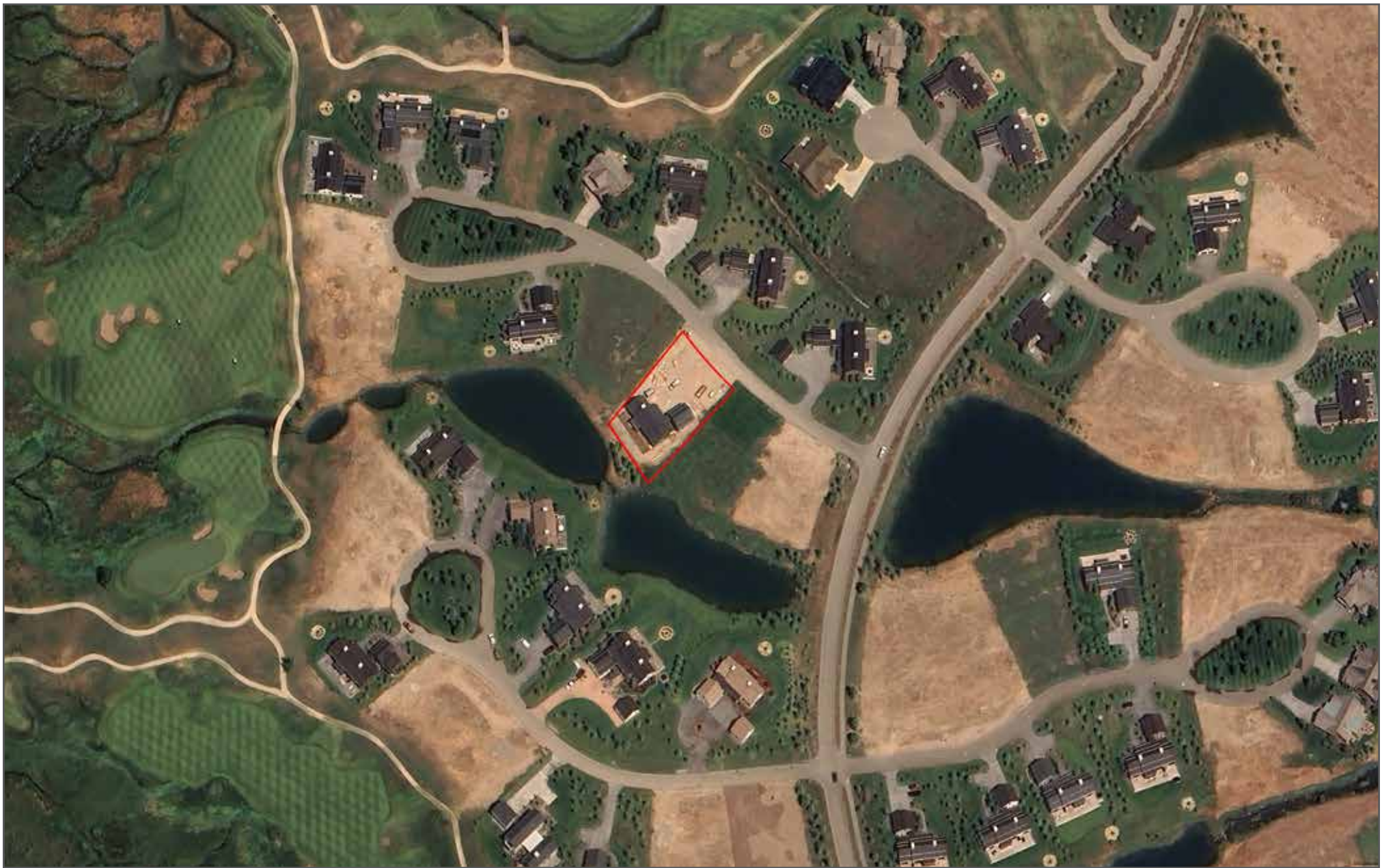
- 3,280sqft custom home- 4 bedrooms 3 ¾ bathrooms, 1 ½ bathroom, 1 full bathroom
- Natural stone fireplace and countertops
  - Solid oak floors
- 16-foot accordion-style glass wall
- Refined natural elements made from reclaimed materials
  - 1.5-acre fishing pond

## LOCATION

- 1 mile to downtown Driggs
- 13 miles to Grand Targhee Resort
  - 34 miles to Jackson Hole
- 45 miles to Yellowstone Park
  - 75 miles to Idaho Falls







## 1105 Shasta Daisy Court - Aerial Map

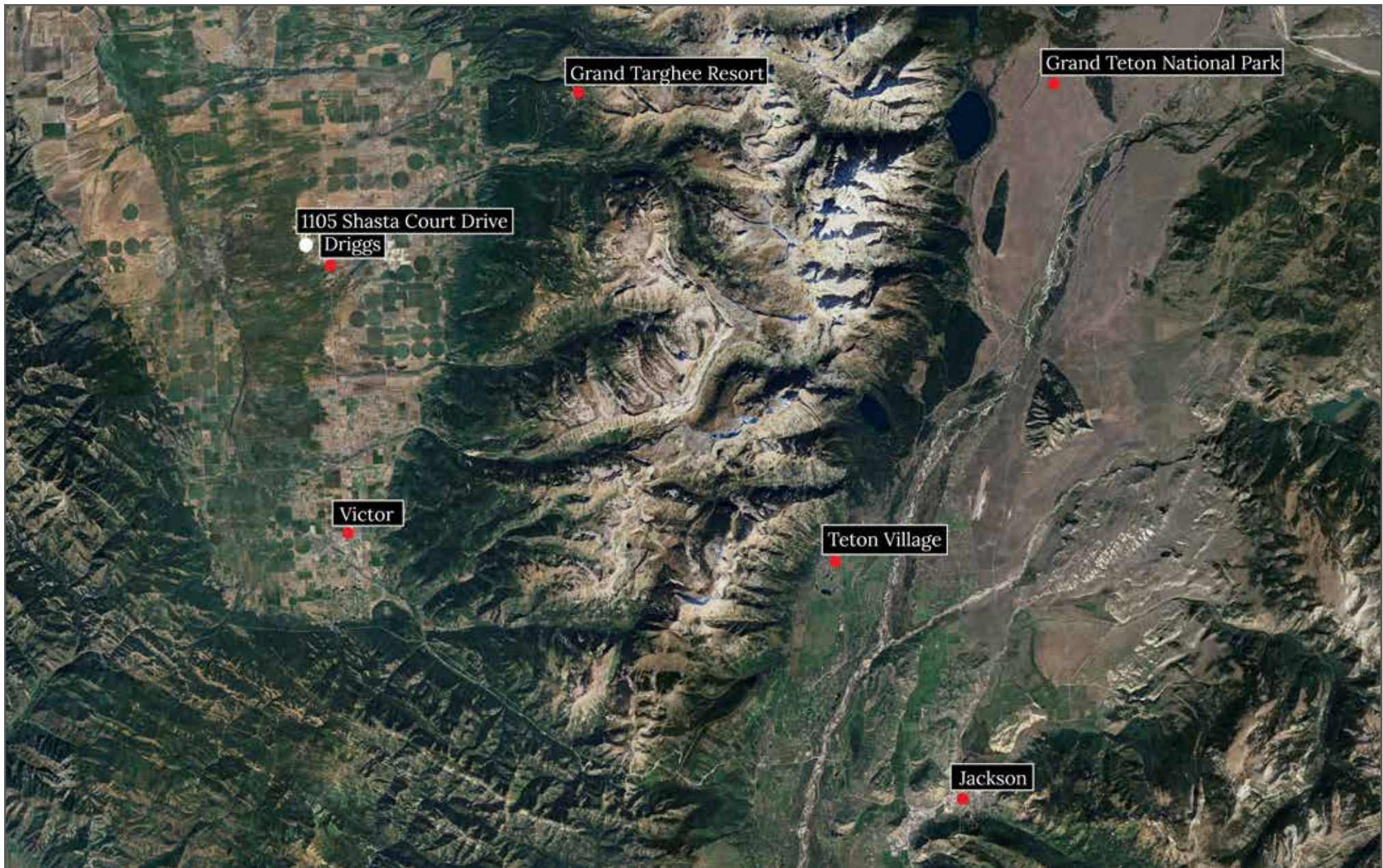
••Maps are for visual aid only accuracy is not guaranteed.



LIVE WATER  
PROPERTIES

[www.livewaterproperties.com](http://www.livewaterproperties.com)





## 1105 Shasta Daisy Court - Location Map

••Maps are for visual aid only, accuracy is not guaranteed.



LIVE WATER  
PROPERTIES

[www.livewaterproperties.com](http://www.livewaterproperties.com)