



# Ice House Creek Ranch

FREMONT COUNTY, IDAHO

LIVE WATER  
P R O P E R T I E S



Hunting | Ranching | Fly Fishing | Conservation



# Ice House Creek Ranch

Fremont County, Idaho

±2,368 Acres | Listing Price: \$5,900,000



## Contact

Matt MacMillan, Associate Broker  
307.413.3582 | [matt@livewaterproperties.com](mailto:matt@livewaterproperties.com)  
[www.livewaterproperties.com](http://www.livewaterproperties.com)



The Ice House Creek Ranch presents a rare and exceptional ownership opportunity, blending history, natural resources, privacy, serenity, and stunning beauty into a single property. The ranch spans a total of 2,368 acres, which includes 1,410 deeded acres with an additional 958 State of Idaho leased acres.

For a productive summer grazing operation, the ranch boasts lush green pastures with irrigation and stock water rights stemming from Ice House Creek and Willow Creek's abundant water supply. The fertile soil and ample grasses create an ideal environment for cattle to thrive during the summer months, ensuring a stable investment for cattle ranchers seeking high-quality grazing land, as it has been since the 1800s.

Beyond its agricultural potential, Ice House Creek Ranch is equally suited for recreational purposes. The picturesque landscape comprising and surrounding the ranch offers many outdoor activities, including hiking along scenic trails, fishing, horseback riding, birdwatching amidst diverse wildlife habitats, snowmobiling, and snowshoeing. At night, the clear skies provide an unparalleled opportunity for stargazing, adding to the ranch's appeal as a nature lover's paradise.

The property's versatility is a standout feature, making it a unicorn in the realm of real estate offerings. Whether one envisions a productive cattle ranch or a serene recreational retreat, Ice House Creek Ranch fulfills both aspirations with its combination of productive grazing land and breathtaking natural beauty. It represents a rare chance to own a property that not only meets but exceeds expectations for both agricultural productivity and recreational enjoyment.







## Location

Secluded 16 miles west of the historic town of Island Park, ID, Ice House Creek Ranch is accessible by air through several commercial airports: Yellowstone Airport (40 miles), Idaho Falls Regional Airport (95 miles), and Bozeman Yellowstone International Airport (130 miles). Local FBOs include Henry’s Lake Airport (27 miles), Yellowstone Airport (40 miles), Ennis-Big Sky Airport (80 miles), and the Driggs/Reed Memorial Airport (80 miles).

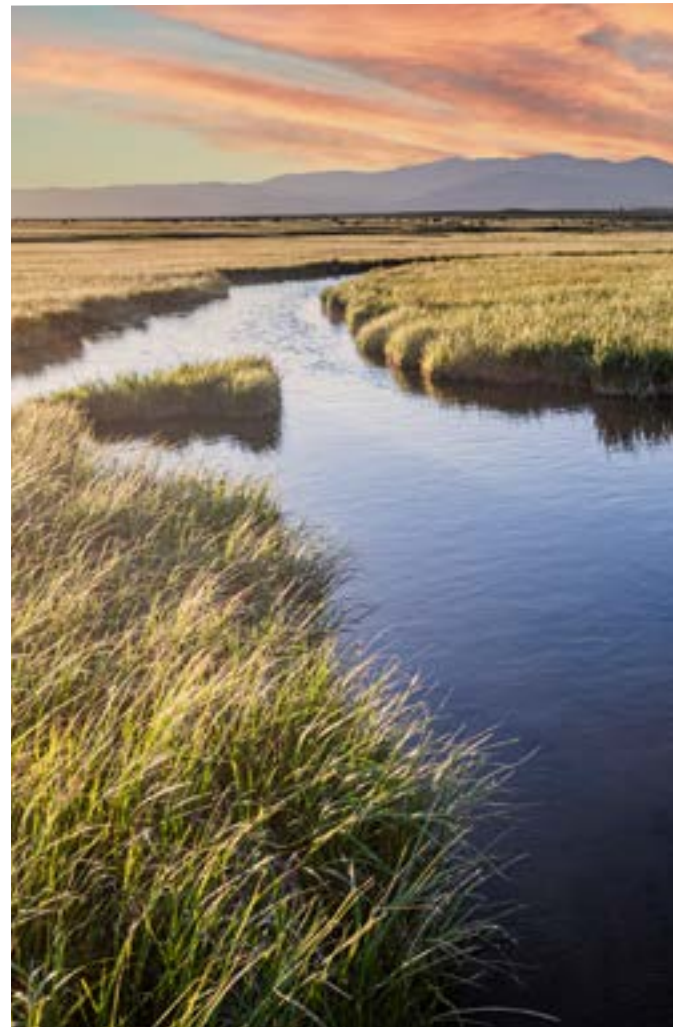
## Acreage and Operations

Ice House Creek Ranch acreage is pristine and beautiful, characterized by picturesque vistas of the surrounding mountain ranges and peaks, the casual meandering banks of Ice House Creek, the meadows of Shotgun Valley, and clear expansive skies. The stunning natural surroundings create an awe-inspiring backdrop for both ranching and recreational pursuits, ensuring a visually captivating experience.

The ranch is currently and primarily used for summer grazing by a local ranching family, supporting 275 pairs for the months of June to October. Cattle are run on the deeded acreage and State of Idaho leased lands, which seamlessly function as one unit. The ranch is perimeter fenced and cross-fenced into three pastures, all of which are rich in high-quality high mountain grasses and have excellent stock water. Calves that come off of Ice House Creek Ranch tend to be some of the heaviest in the region.







## Live Water

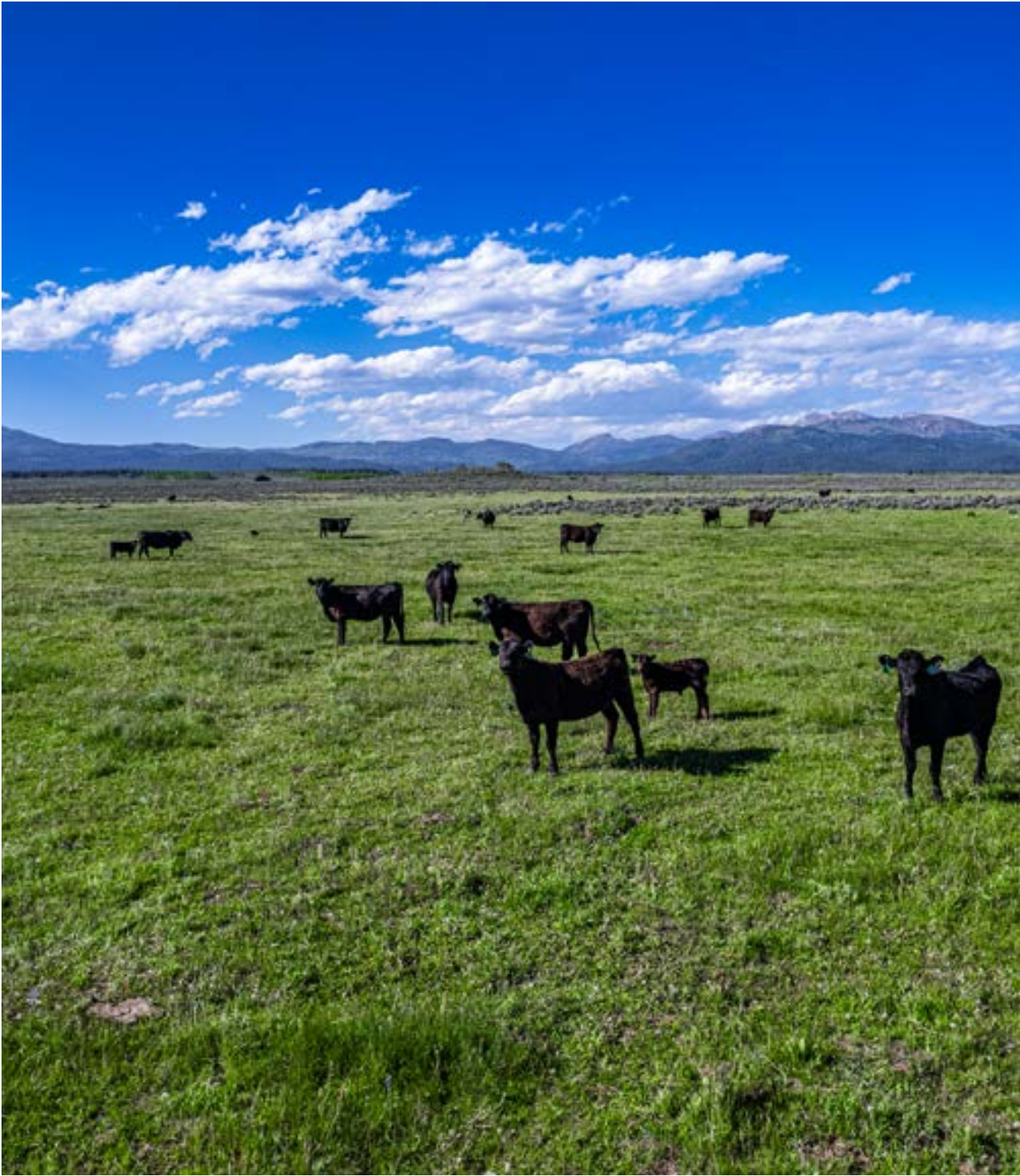
Ice House Creek winds the length of the ranch for over 1.5 miles and is the source of water rights dating back to 1899 for irrigation and stock water on the ranch. Ice House Creek also has fishery potential, specifically on its southern end, where the creek benefits from numerous springs. The creek currently holds fish, with fish density being the highest during the spring and fall when fish run up out of Island Park Reservoir to spawn in Ice House Creek.

The northern end of the ranch borders Ice House Creek Reservoir, which is approximately 80 acres in size. This is a private reservoir that is shared by the surrounding landowners, and Ice House Creek Ranch benefits from access to the reservoir for boating, fishing, paddle boarding, etc. This is a unique situation and presents another spectacular recreational element to the Ranch

## Nearby Live Water

Ice House Creek Ranch is situated near numerous fishing opportunities, only a stone's throw away from the ranch. The Henry's Fork River (30 Minutes). Henry's Lake (35 minutes). Montana's Madison River (45 minutes). Hebgen Lake (45 minutes. Cliff and Wade Lakes (1 hour). the Firehole River in Yellowstone (1 hour 10 minutes). the Bechler River, and Yellowstone River (1 hour 30 minutes).





## Historical Significance

The ranch is steeped in history, with each acre bearing witness to the stories and events that have shaped the land over generations. Several regional Indian tribes, George Rea (the third settler and first cattle rancher in Shotgun Valley), Theodore Roosevelt, followed by A.S. Trude, E.H. Harriman, and others since its discovery in the 1800s, have graced, valued, and protected these acres. From its origins to its development as a working ranch, every corner of Ice House Creek Ranch holds a piece of the past, contributing to its timeless charm and significance.



## Water Rights

Ice House Creek winds the length of the ranch for over 1.5 miles and is the source of water rights dating back to 1899 for irrigation and stock water on the ranch. Ice House Creek also has fishery potential, specifically on its southern end where the creek benefits from numerous springs. The creek currently holds fish, with fish density being the highest during the Spring and Fall when fish run up out of Island Park Reservoir to spawn in Ice House Creek.

The northern end of the ranch borders Ice House Creek Reservoir, which is approximately 80 acres in size. This is a private reservoir which is shared by the surrounding landowners, Ice House Creek Ranch benefits from access to the reservoir for boating, fishing paddle boarding, etc. This is a unique situation and presents another spectacular recreational element to the ranch.







## Location

Secluded 16 miles west of the historic town of Island Park, ID, Ice House Creek Ranch is accessible by air through several commercial airports: Yellowstone Airport (40 miles), Idaho Falls Regional Airport (95 miles), and Bozeman Yellowstone International Airport (130 miles). Local FBOs include Henry's Lake Airport (27 miles), Yellowstone Airport (40 miles), Ennis-Big Sky Airport (80 miles), and the Driggs/Reed Memorial Airport (80 miles).



## Summary

Ranches located in Idaho's Shotgun Valley rarely see the open market. Ice House Creek Ranch has all the ingredients one could hope for in a western ranch, with excellent production, big mountain views, live water and bordered by protected lands.

Steeped in history and offering unparalleled natural amenities, Ice House Creek Ranch possesses the potential to become a legacy property. Its enduring qualities make it an ideal setting for creating lasting memories, forging traditions, and passing down a heritage of stewardship and appreciation for the land.



# Property Details

Fremont County, Idaho | ±2,368 Acres  
Listing Price:\$5,900,000

## ACREAGE

±1.5 miles of Ice House Creek  
Borders the 80 acre Ice House Creek Reservoir  
1,057 deeded acres are unencumbered of conservation easements or restrictions

## OPERATIONS

Current summer grazing operation  
Perimeter fenced and cross fenced into 3 pastures

## LOCATION

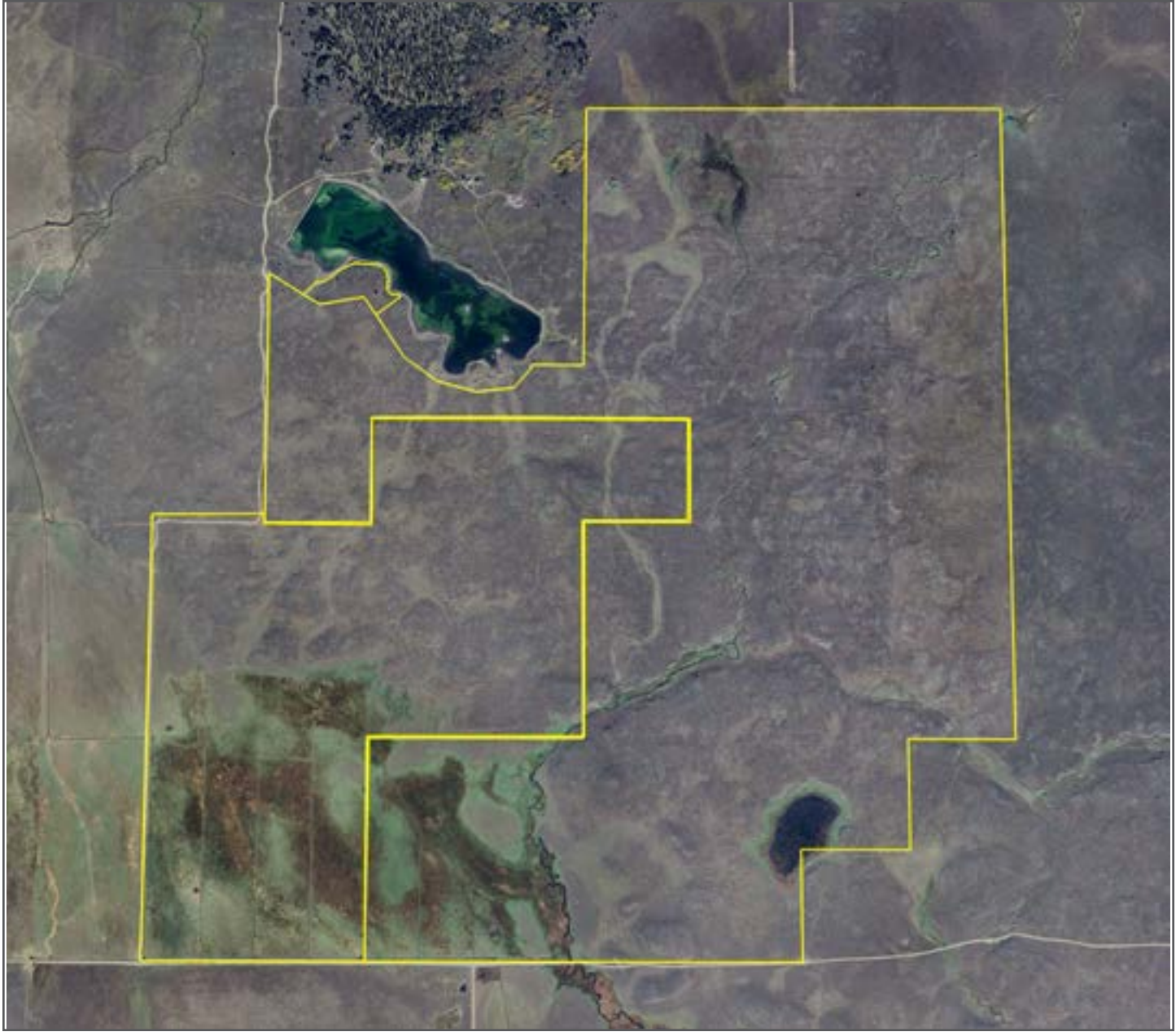
16 miles west of Island Park, Idaho  
30 Minutes from the Henry’s Fork River  
35 Minutes from Henry’s Lake  
45 Minutes from the Madison River  
27 miles from Henry’s Lake Airport  
40 miles from West Yellowstone, Montana and Yellowstone Airport  
80 miles from Driggs, Idaho and Driggs/Reed Memorial Airport  
80 miles from Ennis, MT and Ennis-Big Sky Airport  
95 miles from Idaho Falls, Idaho and Idaho Falls  
130 miles from Bozeman, MT and Bozeman International Airport

## CONTACT

For more information please contact  
Matt MacMillan at 307.413.3582 or  
matt@livewaterproperties.com

Brokers representing well-qualified prospective buyers  
are welcome to enquire and are cordially invited to  
contact Live Water Properties for information regarding  
cooperation policies.

Notes:  
1) This is an exclusive listing of Live Water Properties LLC; an agent of Live Water Properties must be present to conduct a showing. The owners respectfully request that other agents and/or prospective buyers contact Live Water Properties in advance to schedule a proper showing and do not attempt to tour or trespass the property on their own. Thank you. 2) Offering subject to errors, omissions, prior sale, change or withdrawal without notice, and approval of purchase by owner. Information provided herein is intended as a general guideline and has been provided by sources deemed reliable, but the accuracy of which we cannot guarantee. 3) Live Water Properties LLC represents the Seller as a Seller’s Agent.



## Ice House Creek Ranch - Aerial Map

••Maps are for visual aid only accuracy is not guaranteed.





## Ice House Creek Ranch - Location Map

••Maps are for visual aid only accuracy is not guaranteed.



LIVE WATER  
PROPERTIES

[www.livewaterproperties.com](http://www.livewaterproperties.com)